

# About the Dutch Shepherd

The Dutch Shepherd, also known as the Hollandse Herdershond, originates from The Netherlands. They have three coat varieties which vary in length and texture: shorthaired, longhaired and rough-haired. The shorthaired dog is the most common variety in North America.

The Dutch Shepherd is a medium weight, medium sized dog, weighing between 55-80 pounds. Males average between 24-26 inches and females average between 23-25 inches at the shoulder. The length of the body exceeds the height in a ratio of 10:9. The body is square, not angulated. The lean head is set off by medium-size prick ears.

Dutch Shepherds are always brindle patterned. Colors range from silver to gold to a darker, almost black appearance.

The breed standard mentions that the Dutch Shepherd is affectionate, obedient, tractable, alert, faithful and reliable. It has an intelligent expression and a lively temperament. The Dutch Shepherd needs clear, consistent guidance and leadership. They learn quickly and excel at a variety of activities.



**Temperament:** Obedient, loyal, intelligent, energetic

**Life Span:** 12-15 years

**Living Environment:** Owners should desire an active dog who is protective and will be included in family life. Not suited for apartments. A fenced yard is ideal.

**Activity Level:** Can vary between dogs. Generally very high level of activity with boundless energy.

**Learning Rate:** Very high. May be handler sensitive. Overbearing training techniques may encourage fear biting.

**Behavior with Children, Small Animals:** Good with their own family, but may need careful introduction to other children. Rough-housing should be discouraged. Needs proper introduction and socialization with smaller animals.

**Grooming Needs:** The Dutch Shepherd does shed and requires weekly brushing along with regular nail trimming.

**Training Considerations:** Puppies need early socialization and should not be allowed to chase cats, children, joggers, bikes or cars. Vigorous daily exercise is required, including time in a wide-open, fenced area. Does well in obedience, agility, flyball, tracking, herding or any of the protection sports. A Dutch Shepherd that is not presented with a variety of ongoing activities may create activities to keep itself occupied. Long walks or hikes, running alongside a bike, or going on car trips will also keep the Dutch Shepherd alert and happy.

**Registries:** FCI, NKC, UKC, ARC, CKC, APRI

# North American Dutch Shepherd Rescue



North American Dutch Shepherd Rescue is a 501(c)3 organization. NADSR became incorporated on January 11th of 2006 as the need for an organized rescue group became more apparent. Since its inception, NADSR has placed hundreds of dogs, which is quite a lot considering the Dutch Shepherd is an uncommon breed in the United States.

NADSR is a foster-based organization. We do not operate a shelter. In an effort to match each dog with a home best suited to meet their unique needs, the temperament and behavior of each dog is carefully evaluated while they are in foster care. Dogs are also taught good house manners, basic obedience skills and are socialized while in foster care.

You can help NADSR's rescue efforts by volunteering to assist with shelter id, transport, fostering and donations. You may also support NADSR by shopping at [cafepress.com/nadsr](http://cafepress.com/nadsr), an online store with many Dutch Shepherd items. Some of NADSR's expenses include, but are not limited to: shelter fees, physical exams, spay or neuter surgery, heartworm testing and meds, vaccinations, treatments for illnesses, microchipping, transport and food. For ways to help, please visit [www.dutchshepherdrescue.org/store](http://www.dutchshepherdrescue.org/store)

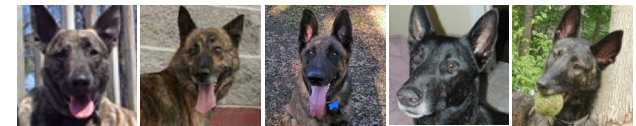
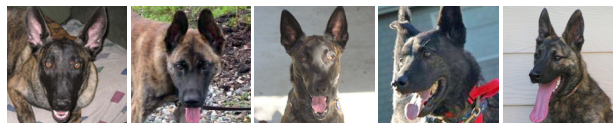
**Contact NADSR**  
[www.dutchshepherdrescue.org](http://www.dutchshepherdrescue.org)

## Trudy Donais

[trudy@dutchshepherdrescue.org](mailto:trudy@dutchshepherdrescue.org)  
General contact

## Karen Modica

[karen@dutchshepherdrescue.org](mailto:karen@dutchshepherdrescue.org)  
Georgia area contact



The North American Dutch Shepherd Rescue (NADSR) is a national 501(c)3 organization comprised of a group of dedicated volunteers.

Our mission is to place rescued Dutch Shepherds into loving and permanent homes, to educate the public about the breed, to promote responsible pet care, and to provide advice and training to adopters of the breed.